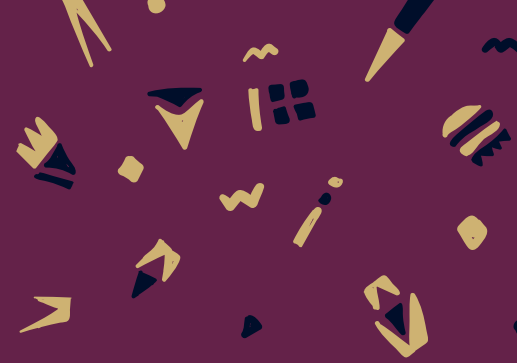


WHICH LEVEL OF THE COLLECTIVE IS RIGHT FOR ME?



THE COLLECTIVE **ELITE**

THE COLLECTIVE

Stage of business

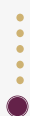
Established business owner
Established brand and offers
Earning regular income
Looking to grow and scale
Raise visibility and PR
Want to grow team
Manage time more effectively
Service based businesses only



New in business + just starting out
New to online business
Looking to build business foundations and start earning consistent income
Very little visibility
All businesses welcome

Duration of program

6 months with ongoing enrolment
Maximum in Elite at any one time - 15



Ongoing can do month by month or sign up for 12 months and save, leave any time

Whats included?

Everything in The Collective PLUS
Monthly 45 min private call with Chichi
Monthly group mastermind call
Weekly live office hours
Accountability Pods
Ticket to live event in London
Private Slack Mastermind Channel



Monthly masterclass
Monthly group Q&A call
New training released each month - based on your needs
Library of training in The Collective Hub
Guest expert training
Facebook community
Preferential rates on other services

Access to Chichi

A lot more!
Receive personalised attention
Specific strategy for your business
Go behind the scenes in my business



Not personalised but you can ask in the group and Q&A call
I check into the Facebook group every day

Investment

£497 PER MONTH
pay in full and receive a 2 hour intensive (value £700)



£47 PER MONTH
12 month option, get 2 months free

WANT TO UPGRADE TO ELITE? HAVE QUESTIONS?

Drop me an email at support@chichieruchalu.com